

Star Rating: 5 star
Walking distance to the Adelaide Convention Centre: 2 minutes



Check-in Time: 1400 hours **Check-out Time:** 1100 hours
Hotel Reward Program: Priority Club (Show membership at check-in)



King Superior Room & King Riverview

Single Room: King Bed
Double Room: King Bed
Twin Room: 2 King Single Beds
Additional Person: A\$50 per person for a rollaway bed (Subject to increase and availability)
Max Occupancy: 3 people

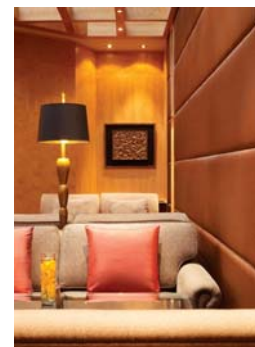
Room Facilities

- Marble Bathroom with Separate Shower & Bath
- Television & Cable
- In-Room Movies
- High Speed Internet Access
- Fax Machines and Speaker Phone Upon Request
- Safety Deposit Boxes (At Reception)
- Work Desk
- Voicemail
- Complimentary Gym Access
- Individual Climate Control Air Conditioning
- In Room Movies
- Mini Bar
- Tea & Coffee Making Facilities
- Iron & Ironing Board
- Hairdryer
- Bathrobe
- Crib Upon Request
- Rollaway beds Upon Request (Complimentary for Children under 12)



Hotel Facilities

- 24 Hour Reception
- 3 Restaurants
- Waves Nightclub
- In House Florist
- Sauna
- Steam Room
- Massage Room
- Valet Parking
- 24 Hour Laundry and Dry Cleaning Service
- 24 Hour Room Service
- Atrium Cocktail Lounge
- Health Club
- Spa
- Gymnasium
- Heated Outdoor Pool
- Business Centre
- Babysitting Service



*The above information is subject to change without notice

Intercontinental Adelaide

North Terrace, Adelaide, SA 5000